

Get ready for Recycle More



Sedgemoor and West Somerset end of February/start of March 2022

What is Recycle More?

A new recycling service for Somerset, allowing people to recycle more from their kerbside every week.

Most people in Somerset are recycling. We are making it easier for everyone to recycle even more which will reduce waste, protect your environment and help tackle climate change.

When are things changing?

Recycle More is coming to all households in Sedgemoor and West Somerset at the very end of February and early March, 2022.

The expanded collections are already running in Mendip, South Somerset and Taunton Deane where they are collecting hundreds of tonnes of extra recycling each week.

Why Recycle More?

Somerset has a proud recycling record, yet more than half the contents of the average Somerset bin could have been recycled.

Our recycling rates have stayed the same for years and it is time to make a change.

We work hard to make sure what you put out for recycling goes where it should.

Nearly 98% of our recycling stayed in the UK last year, including more than 99% of plastics. Find out more online: www.somersetwaste.gov.uk/recycling-tracker



What is changing?

Collecting more recycling from the kerbside.

As well as all the things we already collect, the following **extra items will be picked up every week:**

- Plastic pots, tubs and trays
- Food and drink cartons such as Tetra Pak
- Small electrical items, toasters to laptops
- Small household batteries

Properties with communal/shared collection (such as flats) will have the full Recycle More service or expanded communal collections wherever possible.

Schools collections will be expanded and improved during 2022.



Three-weekly rubbish collections for all

More recycling means more space in rubbish bins. So, rubbish will be collected every three weeks. This is working well in Mendip, South Somerset and Taunton Deane and is used by millions of people across the UK.

New collection days for some

More efficient collection routes mean around two-thirds of households in Sedgemoor and West Somerset will have new collection days. Every household will be sent an individual calendar confirming their collection days well in advance.

The Bright Blue Bag

A new recycling container will be delivered to all households before the first Recycle More collection.

The bag takes:

- Plastic* bottles, pots, tubs and trays
- Food and drink tins and cans
- Foil and empty aerosols.

It is tough and hard-wearing, base-weighted, Velcro-fastened and folds flat.

***NOT taken:** hard to recycle flexible, stretchy or crinkly plastics like carrier bags, cling film, film covers from food trays.

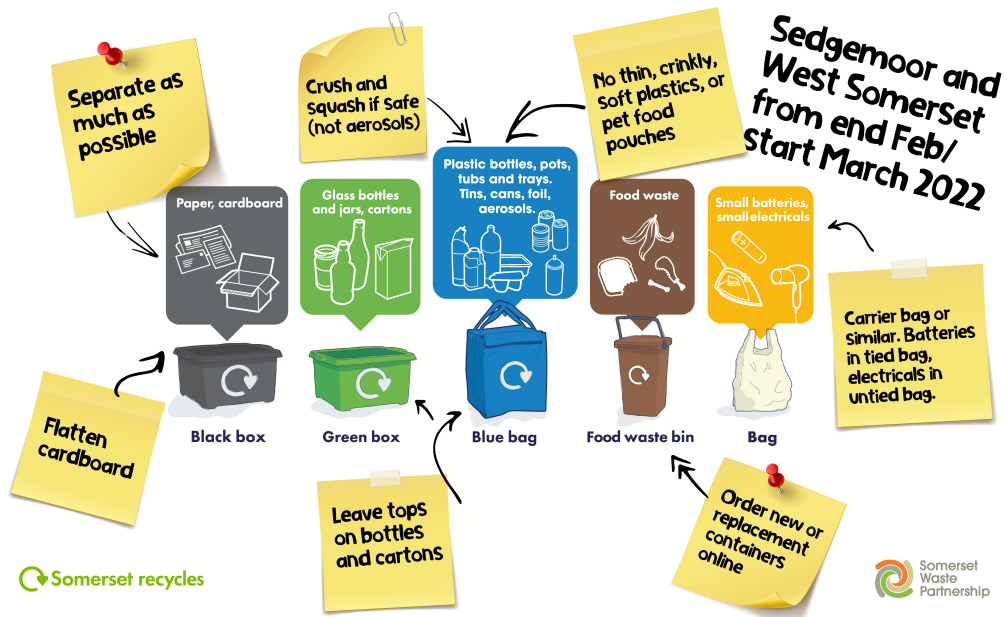
Remember, nothing changes until you get your Bright Blue Bag



What will go where?

New items being collected means a change to what goes into which container.

Once Recycle More starts, this is how recycling should be sorted.



Doing more online

Please make use of our online offer, including ways of preparing for the new service - such as ordering FREE containers.

My Waste Services (MWS)

- Report missed collections
- Request containers, clinical/assisted collections
- Request/pay for garden waste sack collections
- Compliments and complaints
- (From mid-Jan) Ask questions/request support regarding Recycle More

My Collection Day

- Check collection days
- New 'Recycle More days' available from early Feb
- Download a collection day calendar



Communications

- We will write to all households twice before the new service starts, in mid-January and early February. Information will include a guide to what goes into which recycling container and an individual collection day calendar.
- We will send info and updates to stakeholders such as county, district, parish and town councils, and community groups. We hope you can play an active role in raising awareness of Recycle More and preparing people for it.



Here to help

We have seen in Mendip, South Somerset and Taunton Deane that, with guidance and support, three-weekly rubbish collections work well.

People can recycle more, so there is much more room in their rubbish bin.

We want to address questions and worries **before** Recycle More arrives.



What support is available?

- Website information somersetwaste.gov.uk/recycle-more
- Customer services briefed in advance, contacts prioritised
- Extra staff dedicated to Recycle More
- Online engagement through social media, including Facebook Q&As

Requests for more space

We expect some requests for extra space for rubbish, for example from larger families, families with children in nappies and people with certain medical needs. These should be raised through the usual routes:

- Online (using the My Waste Services menu)
- Telephone calls to district council Customer Services

Contacts will be prioritised and handled by dedicated staff as required.

Everyone will be encouraged to check they have the right containers, manage their waste and make full use of weekly recycling collections.

Requests can be followed up with telephone calls and visits, extra space (a larger bin or stickers for rubbish sacks) arranged if essential.

We've helped fund and support groups that help people to switch to re-usable nappies.

Find out more

somersetwaste.gov.uk/recycle-more

Sign up for our regular e-newsletter

Follow us on Facebook and Twitter

Look out for us on Nextdoor

@somersetwaste

